



# TotalControl

ATC simulation



19/01/2023

# ADVANCED SIMULATION MADE EASY

Prepare your people for the operational environment with highly realistic, easy to use, advanced simulation. TotalControl is a flexible, proven and reliable air traffic control simulator for all your training needs.



**Tower**



**Surveillance**



**Digital Tower**

Made by controllers, for controllers, TotalControl is the most reputable simulator on the global market developed by an air navigation service provider. The immersive learning environment of TotalControl will help to maximise your training outcomes for ab initio air traffic control trainees and operational controllers.

Featuring our leading-edge TrueView graphics technology - a hybrid rendering of high resolution imagery from the control tower and underlying terrain data - TotalControl provides a simulation experience almost indistinguishable from the real thing.

## Cloud based simulation



Break down barriers with cloud-based simulation and real-time system monitoring. Train anywhere, any time with remote piloting and TotalControl Sim-in-a-suitcase.

## Your entire FIR simulated



Don't be limited to a small area around your aerodrome. Full country/FIR simulation provides the best experience for multi-position and multi-aerodrome training (e.g. remote towers).

## Flexible graphics options



Build your own 3D rendered environment with Airport Builder or upgrade your tower experience with TrueView.

## Powerful 3D applications

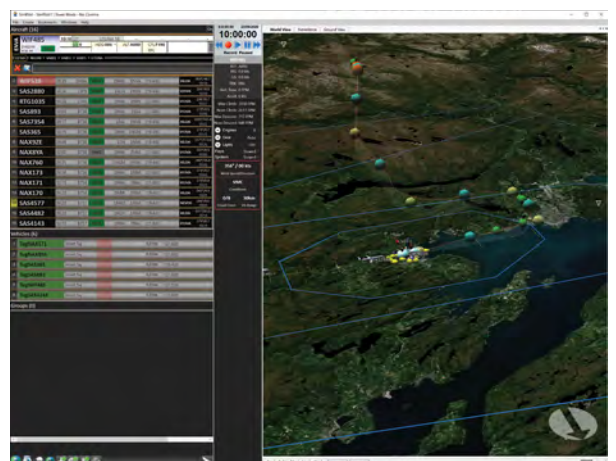


Build worlds and create rich exercises faster with a suite of 3D tools that are accurate and easy to use. Train new sim pilots in just one week.

## Training ready environment and exercises

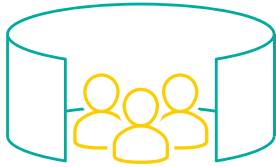


Ready-to-use generic training environment and exercises developed by practicing ATC instructors included.



# FLEXIBLE CONFIGURATIONS

Choose the size and portability of your simulator using off-the-shelf hardware. TotalControl is available in multiple configurations – from large multi-position tower CABs to portable ‘sim in a suitcase’ options, there’s a TotalControl simulation solution to meet your specific needs.



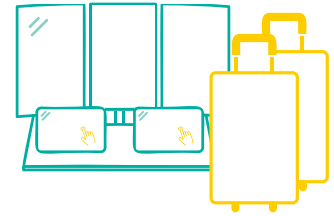
### Large CAB

LCD panel solution well suited for multiple advanced control positions



### Surveillance sim

Flexible configurations and integration options to meet your training needs



### Sim-in-a-suitcase

Modular, mobile desktop solutions that pack the full power of TotalControl

# TOTALCONTROL CLOUD

Do more with your data. TotalControl’s cloud platform is designed to get you training right now, whatever your training needs and budget.



### Seamless and secure

- ▶ One click software updates
- ▶ Secure cloud backups and rollback
- ▶ Advance cloud based systems, monitoring and analytics



### Collaborate and sync

- ▶ Work on aerodrome updates remotely with your team
- ▶ Tweak and test locally, deploy globally
- ▶ Keep track of all past changes and data history



### Train anywhere

- ▶ Setup any PC anywhere to run simulations in minutes
- ▶ Deploy multi-trainee simulations across the country
- ▶ Access new types of sim training and self-study opportunities

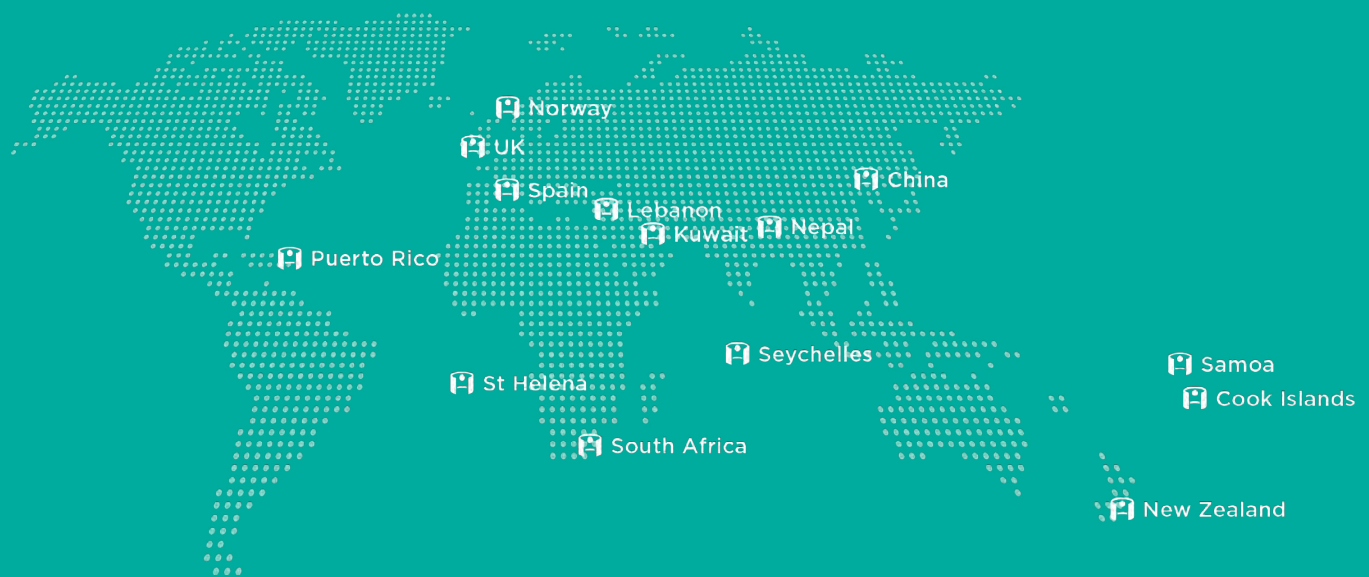


# GLOBAL SIMULATION EXPERTS

Airways International, the commercial arm of Airways New Zealand, works with some of our industry's best aviation experts to deliver products and services that enhance the quality of ATC training, reduce congestion and environmental impacts, and create efficiencies for our customers.

As a leading ANSP and global ATC training provider, Airways uses this expertise to research, develop and implement best practice ATC simulation solutions. Our global footprint for TotalControl simulators spans from Spain to South Africa.

## Where are our simulators?



“Without a doubt, the visuals of our simulators is one of the best I have seen, and I have worked with many”

Jaime Labraña

Air Traffic Controller and Director of STC school

**Talk to us today**

[international@airways.co.nz](mailto:international@airways.co.nz)  
[www.airwaysinternational.com](http://www.airwaysinternational.com)

